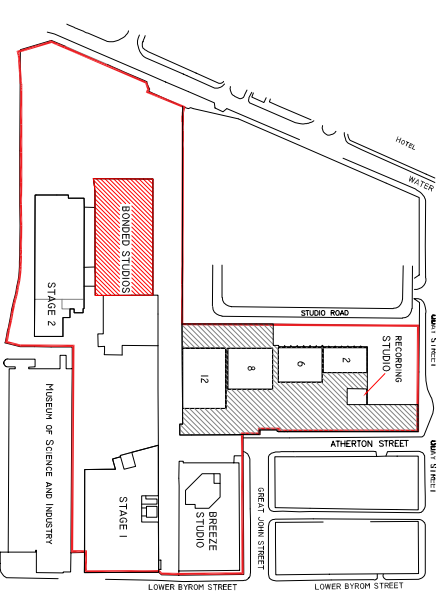
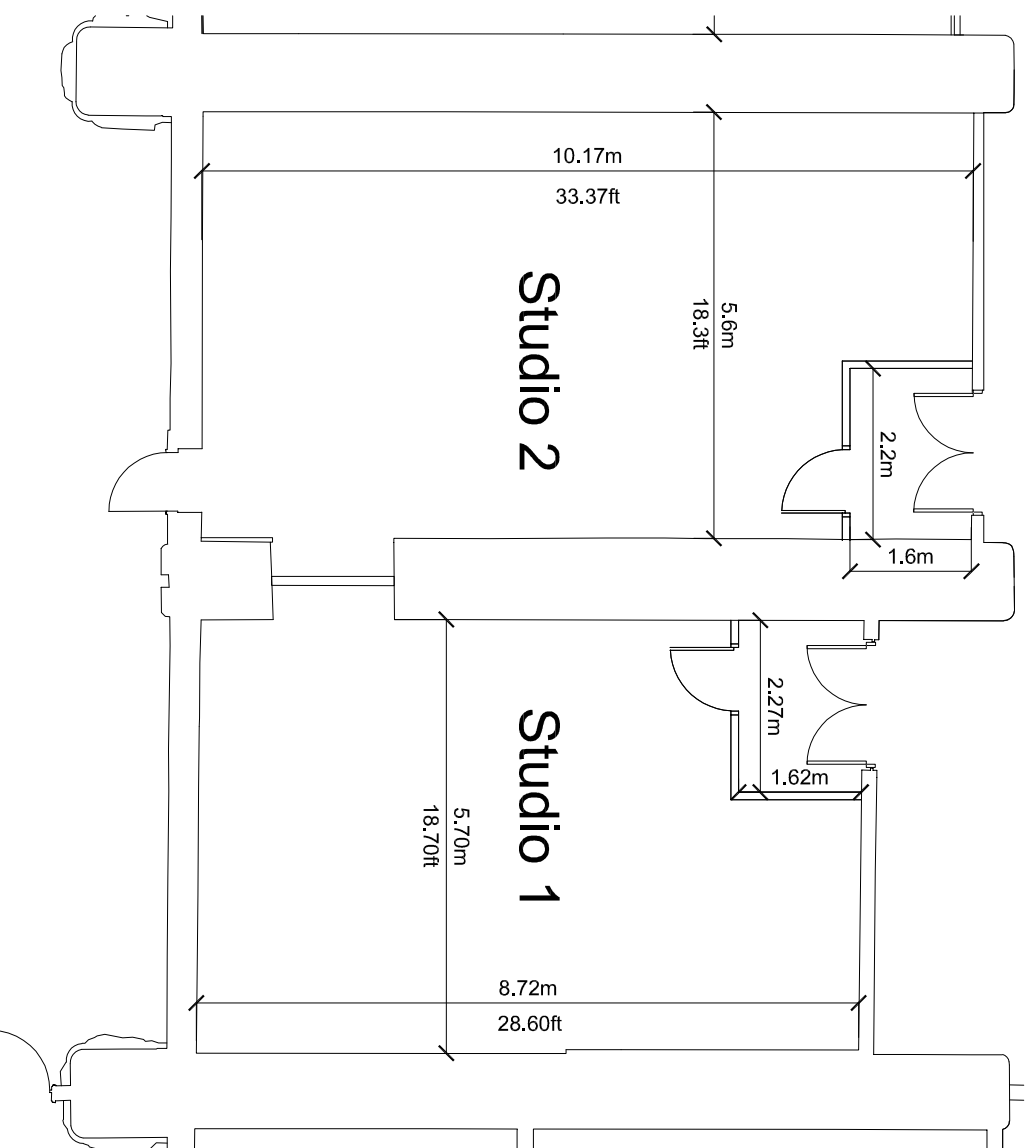


# MANCHESTER STUDIOS

SWITCHED ON

## BONDED UNDERGROUND STUDIOS STUDIO 1 & 2 PLAN



### Location Plan

**Bonded Underground - Studio 1**  
*Dolby Edit and Finishing Suite*

Floor space: 49.70 sq meters / 534.82 sq feet  
Capacity / Audience: 5 - 30 persons (dependent upon layout)  
Dimensions: 8.72m x 5.70m / 28.60ft x 18.70ft  
Grid Height / Type: None  
Tab Track Height:  
Gallery - Roll in gallery space  
Studio Power: 64 Amp 3 Phase

**Studio 1 boasts interconnectivity with Studio 2**

**Bonded Underground - Studio 2**  
*Small Multi-Camera / Multi-Purpose Studio*

Floor space: 58 sq meters / 624 sq feet  
Capacity / Audience: 5 - 30 persons (dependent upon layout)  
Dimensions: 10.17m x 5.70m / 33.37ft x 18.70ft  
Grid Height / Type: 3.5m / 11.50ft - Fixed Box Truss Grid System  
Tab Track Height: 3m / 9.84ft  
Gallery - Roll in gallery space  
Studio Power: 64 Amp 3 Phase

**Studio 2 boasts interconnectivity with Studio 1**

Measurements are included as an approximate guide.  
Please double check on site if critical to production.

**ADEQUATE ARRANGEMENTS FOR ACCESS AND EGRESS TO AND FROM THE STUDIO SHOULD BE ALLOWED IN LINE WITH REGULATIONS**

<b>Production:</b>	Bonded Underground Studios Studio 1 & 2 Plan
<b>Director:</b>	
<b>Designer:</b>	
<b>Drawn By:</b>	
<b>Production Date</b>	
<b>Scale:</b>	1:50 @ A1
<b>Version:</b>	
<b>Useful Title N°:</b>	